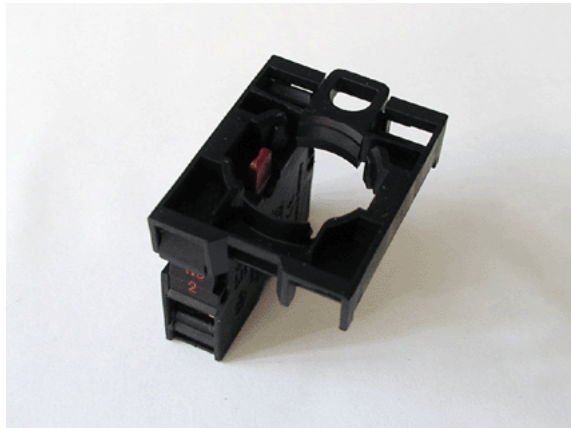


Type: **M22-AK01**  
 Article No.: **216503**  
 Sales text **Complete module, front**



Combination of contact elements with screw terminals and fixing adapter

Front fixing

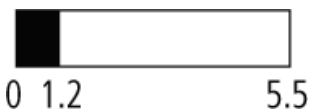
**Ordering information**

Description			Front fixing
Connection technique			Screw terminals
Auxiliary contacts: = safety function, by positive opening to IEC/EN 60947-5-1			
N/C = Normally closed			1 N/C

**Contact sequence**



**Contact travel diagram, stroke in connection with front element**



**Configuration**

1/4	3/6	2/5

## Notes concerning the table header

$I_{xy}$

x = sequence number on fixing adapter

y = function number on contact element

Assignment: Assignment of the fixing adapter with sequence numbers according to EN 50013

<b>General</b>			
Standards			IEC/EN 60947 VDE 0660
Lifespan, mechanical	Operations	$\times 10^6$	> 5
Operating frequency	Operations/h		3600
Actuating force		n	5
Operating torque (screw terminals)		Nm	0,8
Climatic proofing			Damp heat, constant, to IEC 60068-2-78 Damp heat, cyclic, to IEC 60068-2-30
Ambient temperature			
Open		°C	-25...70
Mounting position			As required
Mechanical shock resistance to IEC 60068-2-27 Shock duration 11 ms, half-sinusoidal		g	> 30
Terminal capacities			
Solid		mm <sup>2</sup>	0.75 – 2.5
Stranded		mm <sup>2</sup>	0.5 – 2.5
<b>Contacts</b>			
Rated impulse withstand voltage	$U_{imp}$	V AC	6000
Rated insulation voltage	$U_i$	V	500
Overvoltage category/pollution degree			III3
Control circuit reliability			
at 24 V DC/5 mA	$H_F$	Fault probability	$< 10^{-7}$ , < 1 fault in $10^7$ operations
at 5 V DC/1 mA	$H_F$	Fault probability	$< 5 \times 10^{-6}$ , < 1 fault in $5 \times 10^6$ operations
Max. short-circuit protective device			

Fuseless		Type	PKZM0-10/FAZ-B6/1
Fuse	gG/gL	A	10
<b>Switching capacity</b>			
Rated operational current			
AC-15			
115 V	$I_e$	A	6
230 V	$I_e$	A	6
400 V	$I_e$	A	4
500 V	$I_e$	A	2
DC-13			
24 V	$I_e$	A	3
42 V	$I_e$	A	1,7
60 V	$I_e$	A	1,2
110 V	$I_e$	A	0,8
220 V	$I_e$	A	0,3
Lifespan, electrical			
AC-15			
230 V/0.5 A	Operations	$\times 10^6$	1,6
230 V/1.0 A	Operations	$\times 10^6$	1
230 V/3.0 A	Operations	$\times 10^6$	0,7
DV-13			
12 V/2.8 A	Operations	$\times 10^6$	1,2

Moeller GmbH, Hein-Moeller-Str. 7-11, D-53115 Bonn  
E-Mail: [catalog@moeller.net](mailto:catalog@moeller.net), Internet: [www.moeller.net](http://www.moeller.net), <http://catalog.moeller.net>  
HPL-C2007G V2.1 © 2007 by Moeller GmbH